



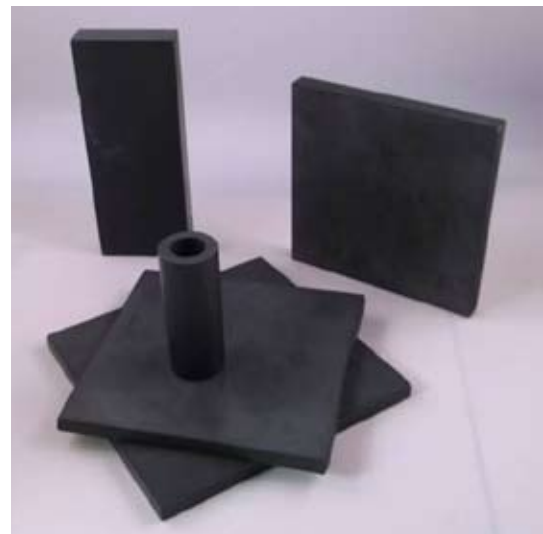
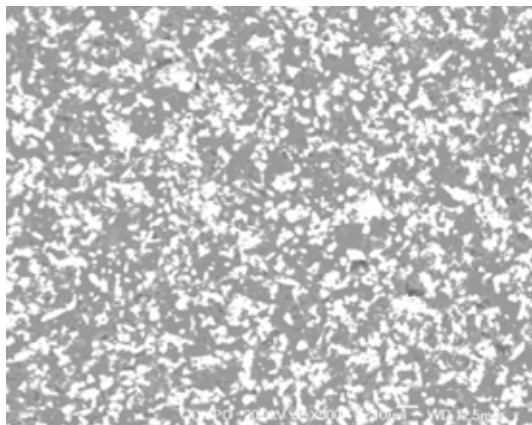
# DuraWear

## Lightweight Ceramic - Ceramic Composites

### Hard ceramic composites for abrasive wear protection

- Boron Carbide based composite ceramics – high intrinsic hardness for applications where abrasive wear is an issue
- High Boron Carbide content for increased hardness and wear protection
- Lightweight for applications where reduced weight is important
- Consolidation by pressureless sintering – economical process with ability to form complex shapes
- Further densification possible without changing the material characteristics

DuraWear
Density = 2.62g/cm <sup>3</sup>
Hardness HV <sub>0.5</sub> =31GPa
Toughness K <sub>IC</sub> =3.4 MPa/m <sup>2</sup>
<small>*K<sub>IC</sub> toughness as measured by the Indentation method</small>



[www.precision-ceramics.com](http://www.precision-ceramics.com)  
 Advanced Technical Ceramic Solutions



**PRECISION CERAMICS USA, INC.**  
 9843 18<sup>th</sup> St North, Suite 120, St. Petersburg, FL 33716  
 Tel: (727) 388 5060 Fax: (813) 435 2020  
 Email: [info@precision-ceramics.com](mailto:info@precision-ceramics.com)  
[www.precision-ceramics.com](http://www.precision-ceramics.com)